

Procedure	Comments	Volume
Microscopic Exam	Scan for microbes and debris (plating may be recommended to determine viability)	2 ml
Culture, Direct	Yeast/mold & bacteria	50 ml
	Yeast/mold	50 ml
	Bacteria	50 ml
	Brettanomyces	50 ml
Culture, Membrane Filtration	Yeast/mold & bacteria	250 ml
	Yeast/mold	250 ml
	Bacteria	250 ml
	Brettanomyces	250 ml

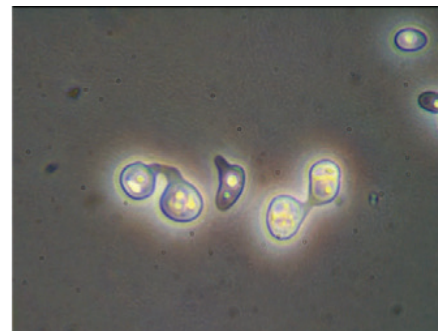
Selecting A Culturing Method

Wine Type	Description	Culturing Method
Unfiltered	Cloudy	Direct culture
Unfiltered barrel samples*	May be cloudy	Direct culture
Clear/Filtered bottled samples	Clear, < 2 CFU/ml	Membrane filtration

* Since cells tend to settle at the bottom of barrels, we recommend stirring prior to sampling.

Microbe Growth In Culture

Microbe	Typical Growth Time	Final Count
<i>Saccharomyces</i>	1 - 2 days	7 days
<i>Zygosaccharomyces</i> *	1 - 2 days	7 days
Surface film yeasts	1 - 2 days	7 days
<i>Dekkera/Brettanomyces</i>	3 - 5 days	10 days
<i>Acetobacter</i>	2 - 4 days	7 days
<i>Oenococcus</i>	4 - 6 days	7 days
<i>Pediococcus</i>	4 - 6 days	7 days
<i>Lactobacillus</i>	7 days	7 days



Zygosaccharomyces

All samples for analysis must be dropped off or mailed to Gusmer Analytical Services, 640 Airpark Road, Suite D, Napa, CA 94558. For any questions regarding samples or for the latest pricing please contact the Gusmer Napa Laboratory at 707.224.7903.

Important Note: Gusmer Enterprises, Inc. provides this information to the best of our knowledge. This information does not claim to be complete and Gusmer Enterprises, Inc. cannot assume liability for improper use. All users are advised to test products to meet their specific needs.